



E-Mail: nationalbgudiaautonomous@gmail.com

☎ 080-26674441

THE NATIONAL COLLEGE BASAVANAGUDI, BENGALURU- 04
AUTONOMOUS

Website: www.ncbgudi.com



Report of Feedback Analysis (2018-2019) Student Satisfaction Survey

Introduction:

The National College-Autonomous, Basavanagudi, Bengaluru, aims to offer the best possible environment and learning experience to encourage students to perform to their full potential for academic achievement. Students, Teachers Alumni and Employers play an important role in the evaluation, development and enhancement of the quality of this learning experience. The National College collects the feedback on various Teaching-Learning aspects from different stakeholders such as the Students, Parents, Alumni, Teachers and Employers. The feedback collected from the individuals has been analysed and taken to the consideration for the development of Teaching-Learning environment.

Students' Feedback Report

The Students' Feedback on Teaching-Learning at The National College-Autonomous, Basavanagudi, Bengaluru campus is designed to get decisive feedback from Students that can be used towards the improvements in the quality of Teaching-Learning environment. For the academic year 2018-2019, Students' feedback is sought from around 938 Students about the Teaching-Learning environment. The Students given their responses for the following Questionnaire:

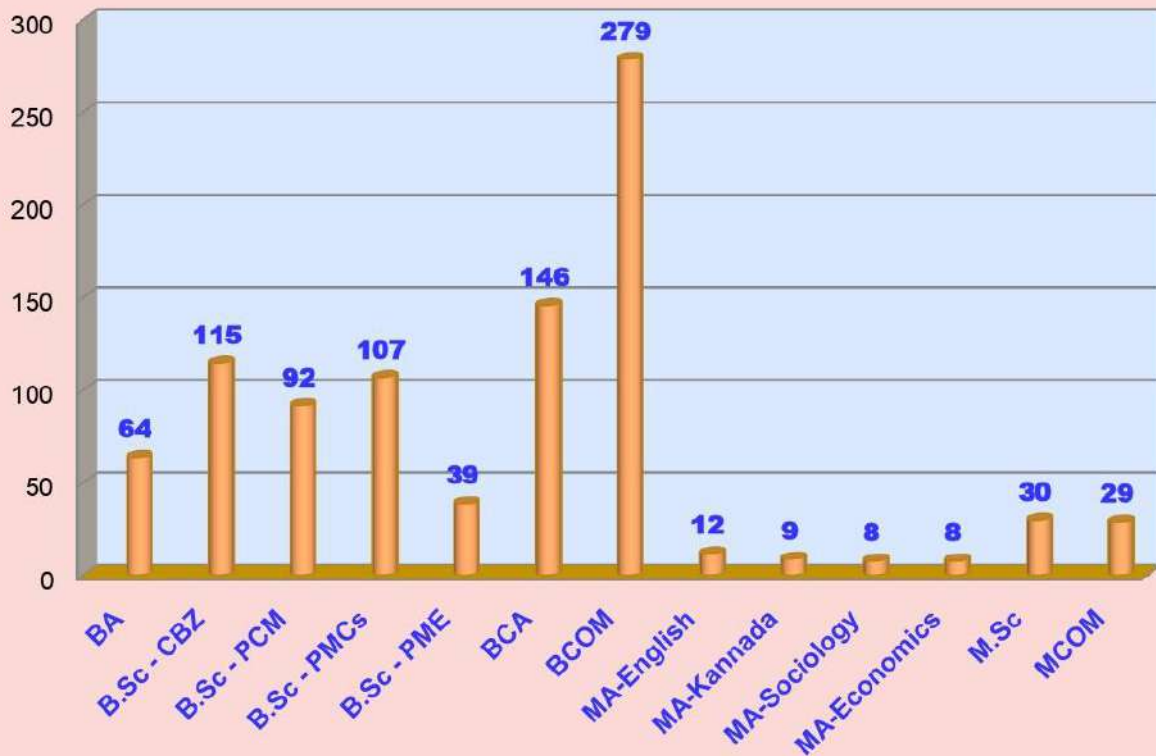
Question Number	Teaching-Learning Environment Questionnaire
1.	The percentage of syllabus completed in the class
2.	Did the teachers come well prepared for the class?
3.	How well were the teachers able to communicate?
4.	The teacher's approach to teaching can best be described as .
5.	The internal evaluation process is fair.
6.	Was your performance in assignments discussed with you?
7.	The institute takes active interest in promoting internship, student exchange, field visit opportunities for students.
8.	The teaching and mentoring process in your institution enables you with cognitive, social and emotional growth.
9.	The institution provides multiple opportunities to learn and grow.
10.	Teachers inform you about your subject and language competencies, course outcomes and programme outcomes.
11.	Your mentor does a necessary follow-up with an assigned task to you.
12.	The teachers illustrate the concepts through examples and applications.
13.	The teachers identify your strengths and encourage you by providing challenging exercises/ you with graded exercises.
14.	Teachers are able to identify your weaknesses and help you to overcome them.

15.	As a student, you were a part of monitoring and reviewing the quality of teaching-learning process
16.	The teachers use Learner centric methods, such as experiential learning, participative learning and problem solving methodologies for enhancing learning experiences.
17.	Teachers encourage you to participate in extracurricular activities.
18.	Teachers make continuous effort to equip you soft skills, life skills and employability skills .
19.	What percentage of teachers use ICT tools such as LCD projector, Multimedia, etc. while teaching?
20.	20. The teachers encourage you to refer journals, articles and magazines available in the Library.
21.	The library is well resourced to meet your academic references.
22.	The Library hour allotted in the timetable is sufficient for your additional references.
23.	The overall quality of teaching-learning process in your institute has contributed to your personality and growth in education.

The National College Basavanagudi, Bengaluru - 4 Students Satisfaction Survey Report 2018-19

SI No.	Programme	Response
1	BA	64
2	B.Sc - CBZ	115
3	B.Sc - PCM	92
4	B.Sc - PMCs	107
5	B.Sc - PME	39
6	BCA	146
7	BCOM	279
8	MA-English	12
9	MA-Kannada	9
10	MA-Sociology	8
11	MA-Economics	8
12	M.Sc	30
13	MCOM	29
	Total	938

Students Feedback Responses



1. The percentage of syllabus completed in the class



2. Did the teachers come well prepared for the class?



3. How well were the teachers able to communicate?



4. The teacher's approach to teaching can best be described as



5. The internal evaluation process is fair



6. Was your performance in assignments discussed with you?

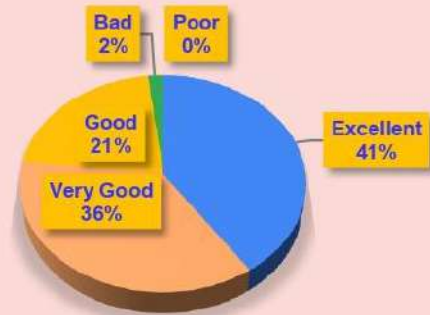


7. The institute takes active interest in promoting internship, student exchange, field visit opportunities for students.



■ Excellent ■ Very Good ■ Good ■ Bad ■ Poor

8. The teaching and mentoring process in your institution enables you with cognitive, social and emotional growth



■ Excellent ■ Very Good ■ Good ■ Bad ■ Poor

9. The institution provides multiple opportunities to learn and grow.



■ Excellent ■ Very Good ■ Good ■ Bad ■ Poor

10. Teachers inform you about your subject and language competencies, course outcomes and programme outcomes



■ Excellent ■ Very Good ■ Good ■ Bad ■ Poor

11. Your mentor does a necessary follow-up with an assigned task to you



■ Excellent ■ Very Good ■ Good ■ Bad ■ Poor

12. The teachers illustrate the concepts through examples and applications.



■ Excellent ■ Very Good ■ Good ■ Bad ■ Poor

13. The teachers identify your strengths and encourage you by providing challenging exercises/ you with graded exercises



■ Excellent ■ Very Good ■ Good ■ Bad ■ Poor

14. Teachers are able to identify your weaknesses and help you to overcome them.



■ Excellent ■ Very Good ■ Good ■ Bad ■ Poor

15. As a student, you were a part of monitoring and reviewing the quality of teaching-learning process



■ Excellent ■ Very Good ■ Good ■ Bad ■ Poor

16. The teachers use Learner centric methods, such as experiential learning, participative learning and problem solving methodologies for enhancing learning experiences.



■ Excellent ■ Very Good ■ Good ■ Bad ■ Poor

17. Teachers encourage you to participate in extracurricular activities.

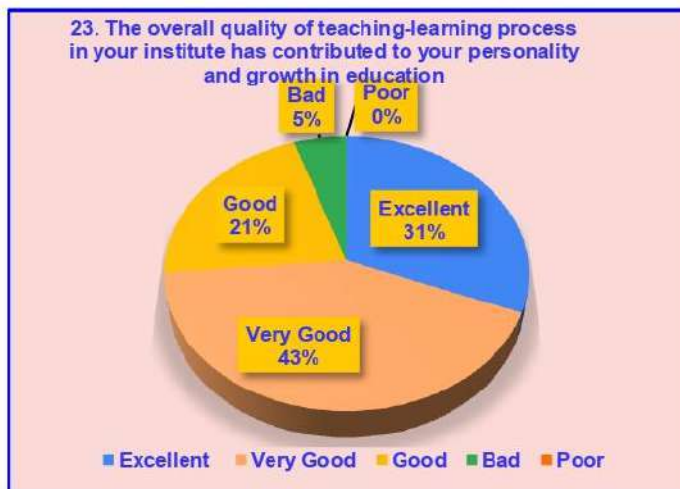
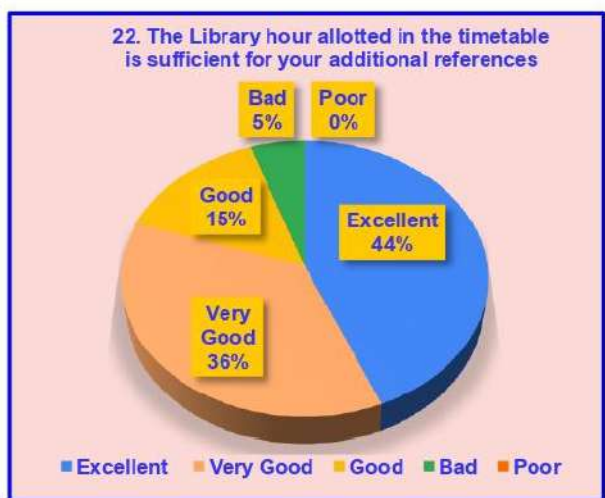
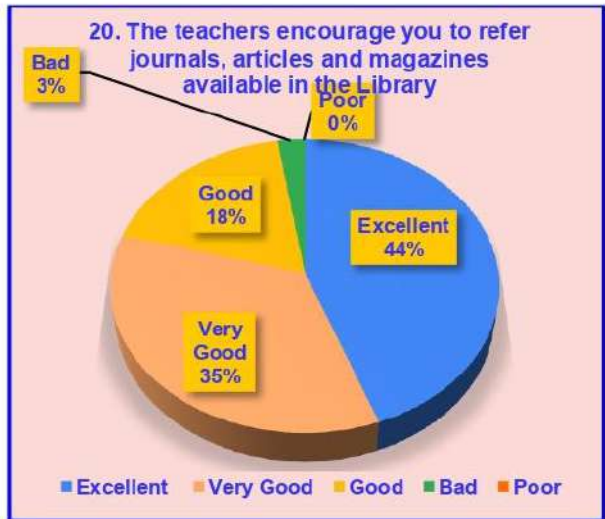
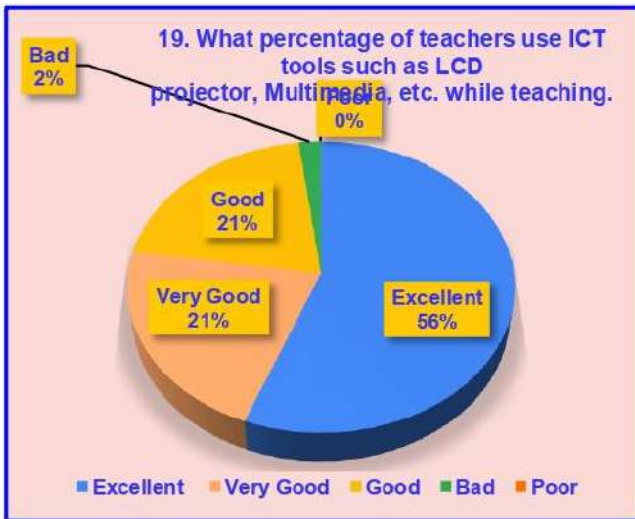


■ Excellent ■ Very Good ■ Good ■ Bad ■ Poor

18. Teachers make continuous effort to equip you soft skills, life skills and employability skills



■ Excellent ■ Very Good ■ Good ■ Bad ■ Poor



Students Satisfaction Survey Responses 2018-19

Question	Excellent	Very Good	Good	Bad	Poor
1	725	135	77	1	0
2	392	508	23	15	0
3	484	358	81	15	0
4	380	342	200	16	0
5	397	329	196	16	0
6	460	271	190	17	0
7	491	242	190	15	0
8	380	340	200	18	0
9	323	403	200	12	0
10	407	325	189	17	0
11	424	322	181	11	0
12	439	302	184	13	0
13	481	266	180	11	0
14	497	217	213	11	0
15	321	404	200	13	0
16	397	339	189	13	0
17	418	309	195	16	0
18	416	348	160	14	0
19	524	202	193	19	0
20	416	327	172	23	0
21	451	305	134	48	0
22	410	342	137	49	0
23	291	399	200	48	0

Students Satisfaction Survey Analysis 2018-19

Question	Mean	Median	Standard	Minimum	Maximum
1	3.69	4	0.62	1	4
2	3.36	3	0.61	1	4
3	3.40	4	0.71	1	4
4	3.16	4	0.81	1	4
5	3.18	3	0.82	1	4
6	3.25	3	0.84	1	4
7	3.29	4	0.84	1	4
8	3.15	3	0.82	1	4
9	3.11	3	0.77	1	4
10	3.20	3	0.82	1	4
11	3.24	3	0.80	1	4
12	3.24	3	0.81	1	4
13	3.30	4	0.81	1	4
14	3.28	4	0.85	1	4
15	3.10	3	0.78	1	4
16	3.19	3	0.80	1	4
17	3.20	3	0.83	1	4
18	3.24	3	0.78	1	4
19	3.31	4	0.87	1	4
20	3.21	3	0.83	1	4
21	3.24	3	0.88	1	4
22	3.19	3	0.87	1	4
23	2.99	3	0.85	1	4

Overall Students Satisfaction Survey Responses



Majority of the Students' (46%) agreed that the Teaching-Learning environment is Excellent. Around 34% of the Students' agreed that the Teaching-Learning aidS provided in the college is very Good. It is observed that 18% of the respondents agreed that the Teaching-Learning systems are Good. The Students feedback revealed that 2% of them agreed Bad and none of them agreed Poor.

The Feedback report will be placed before the academic council and governing body for continuous improvement in the areas where the questions are underperforming.

